

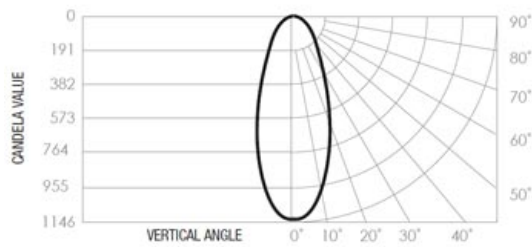
# D900.SHX Curve LED downlight Datasheet



## Product codes

<b>Unit:</b> D900.SHX	<b>Family:</b> CR	<b>Colour temp. (K):</b> 3K	<b>Beam angle (°):</b> 45	<b>Colour:</b> W (White)
--------------------------	----------------------	--------------------------------	------------------------------	-----------------------------

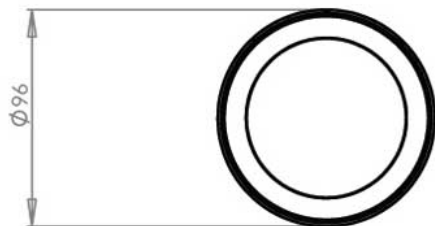
## Photometrics



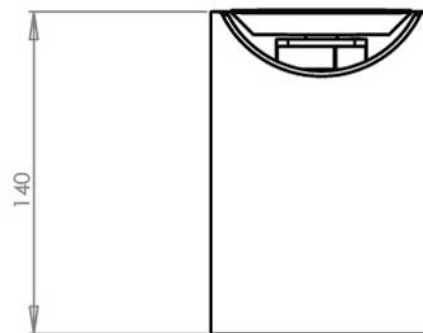
**Lumen output:** 802lm  
**Colour temp.:** 3000K  
**Efficacy:** 49lm/W  
**Beam angle:** 45°

## Dimensions (mm)

Front view



Side view



## Physical

**Weight:**  
730g

**Gimbal angle:**  
90°/360°

**Warranty:**  
7 years

## Electrical

**Input voltage:**  
220-240V

**Power usage:**  
16.3W

**Driver power factor:**  
0.93

**IP rating:**  
IP40

**Surge protection:**  
3100

**Dimmable:**  
Yes

**Driver:**  
DRV900S:350-13

## Operational

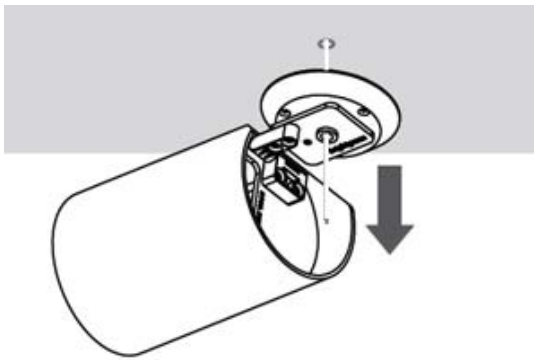
**Operating temp.:**  
-30 to 81°C

**Average temp.:**  
56°C

**Ambient temp.:**  
-28 to 70°C

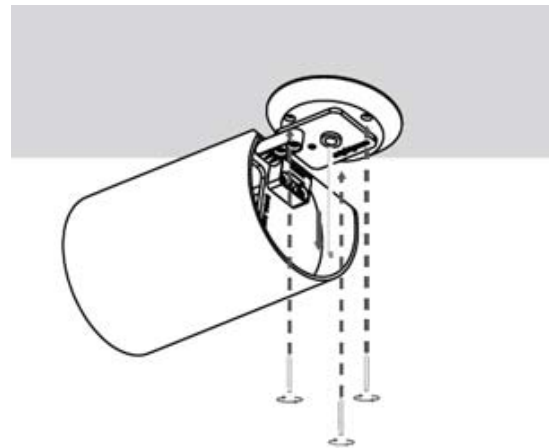
**Lifetime:**  
70000 hrs (@TA25)

## Installation



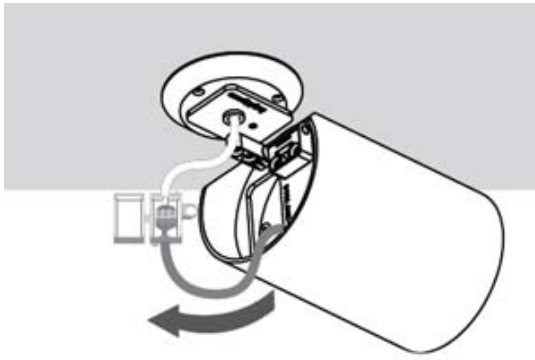
### Step 1

Thread the power cable through the base plate and align the base plate to the roof.



### Step 2

Fasten the base plate to the roof using the provided screws.

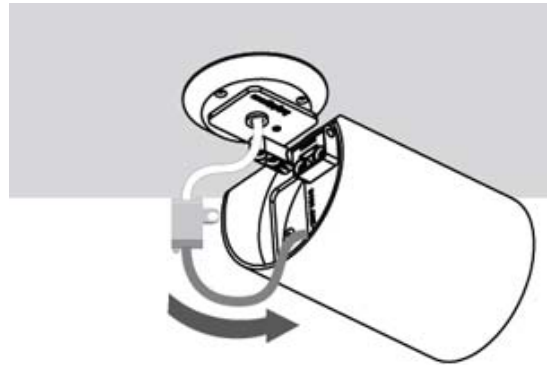


### Step 3

Remove the junction box from the back cavity of the D900 SHX.

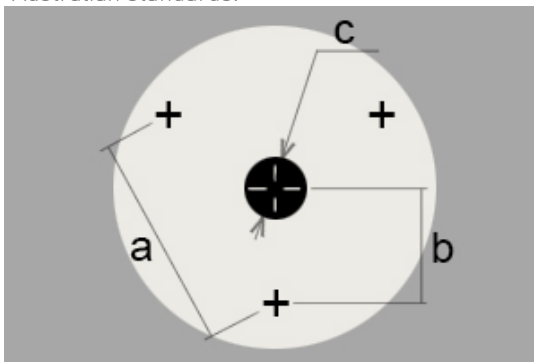
Open the junction box and connect the power cable to the junction box.

Re-attach cover of junction box inline with Australian standards.



### Step 4

Slot the junction box back into the D900 SHX cavity.



### Step 7

Ceiling mount hole piloting.

a=43mm ; b=25mm ; c=6.5mm