

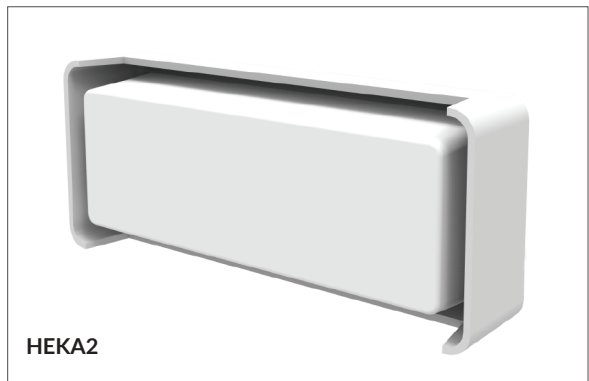
EXTERIOR LIGHTING



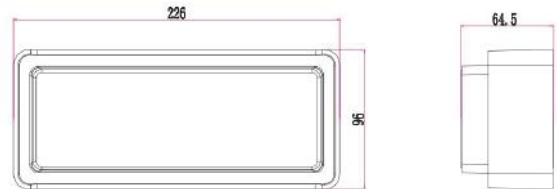
HEKA SERIES
LED Exterior Surface Mounted Wall Lights

Product Features

- Input voltage: 100-240V AC 50/60Hz
- Inbuilt constant current driver included
- Driver output voltage: 18-42V
- Driver input current: 0.065A
- Driver output current: 300mA
- Housing & heatsink: powder coated-aluminium
- Diffuser: PC
- Back plate: PC
- Power factor: >0.5
- Ambient Temp: -20 to +50°C (the life of the lamp will gradually reduce if used outside these temperature parameters)
- Not suitable for use with dimmers
- Suitable for 2-way switching
- Suitable for use with PIR or Microwave sensors



30,000hr Lifetime	120° Beam Angle	IP65 Rated	3YEAR Replacement Warranty
----------------------	--------------------	----------------------	---



PART NO.	DESCRIPTION	KELVIN (K)	LUMENS (LM)	Lumious Efficiency	WATT (W)	LEDs	CRI	WEIGHT (Kg)	BOX (cm)	CARTON QTY
HEKA1	WALL LED S/M Dark Grey Rect	3000	732.94	55.02lm/W	13	12pcs 3030	>80	0.90	28x11x7.5	8
HEKA2	WALL LED S/M White Rect	3000	732.94	55.02lm/W	13	12pcs 3030	>80	0.90	28x11x7.5	8

Brochure updated on 23.04.2018