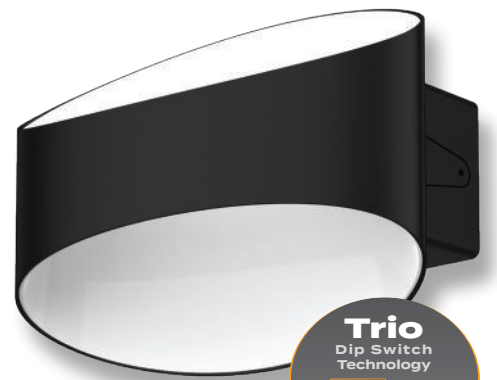


Glow-8 LED Wall Light



Description

The GLOW-8 is a modern and decorative IP20 Interior Wall light that is designed to offer low glare, while offering an attractive up and down lighting effect to interior wall areas where ambient soft glow lighting is required. Tricolour switchable: choose between Warm White 3000K, Neutral White 4000K, or White 5700K colour temperatures with the flick of a dip switch. Featuring a Black or White powder coated Aluminium frame, with an opal polycarbonate diffuser. Complete with Flicker Free Driver to avoid light flickering in videos. Fully dimmable with suitable dimmers. Backed by our 3 Year Replacement Warranty.

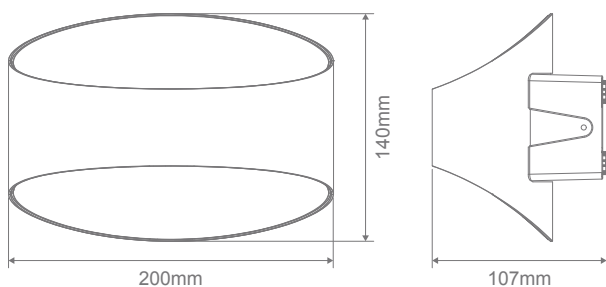


Specification Features

Input Voltage:	240V
Power (W):	8W
IP rating (IP):	20
Lumens (lm):	Warm White 3000K - 320lm Neutral White 4000K - 350lm White 5700K - 400lm
LED type:	SMD
CCT:	3000K - 4000K - 5700K (Switchable)
CRI:	≥80
Beam angle (°):	360°
Dimmable:	Yes*
Lifespan (hrs):	50,000hrs

*Fully dimmable with suitable dimmers.

Diagrams / Additional



Item No.	Variant		CCT
	Blk	Wht	
GLOW-8	22660	22661	TRIO